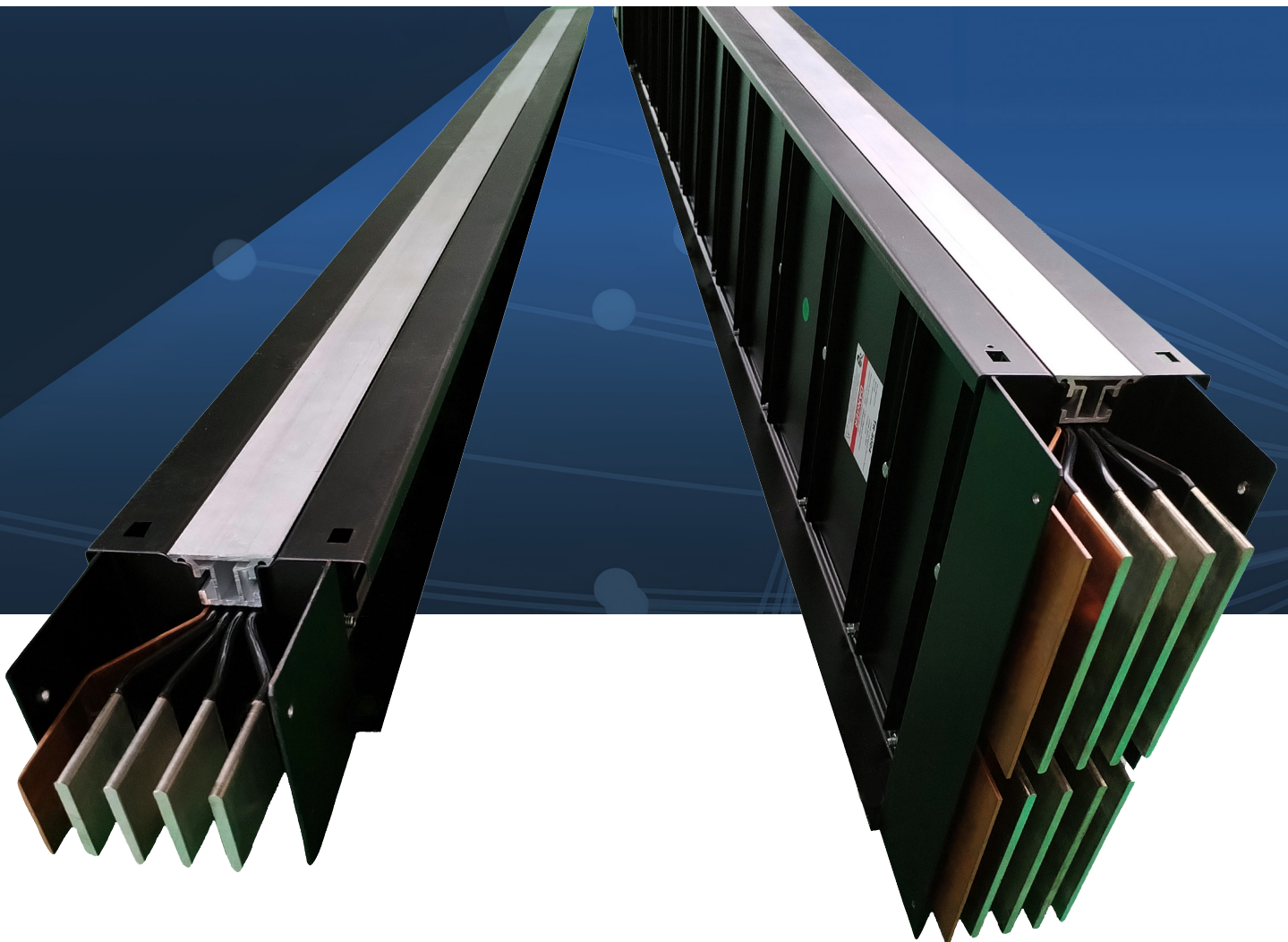




**IEC 61439-6 400A TO 7500A
UL 857 630A TO 6000A
LV BUSWAY SYSTEM**



BUSWAY

INTRODUCTION

Busway system is widely acceptable and installed in this modern electrical industry for reliable distribution. It has been recognized in recent years due to rapid economic growth and its demands. It has for better features compared with cable distribution, with details as follow:

- (1) Low voltage drop & impedance
- (2) Flexibility in power distribution & expansion
- (3) Easy installation & maintenance
- (4) Less space required & compact design
- (5) More rigid & stronger enclosure
- (6) Higher short circuit withstand strength
- (7) Longer life span

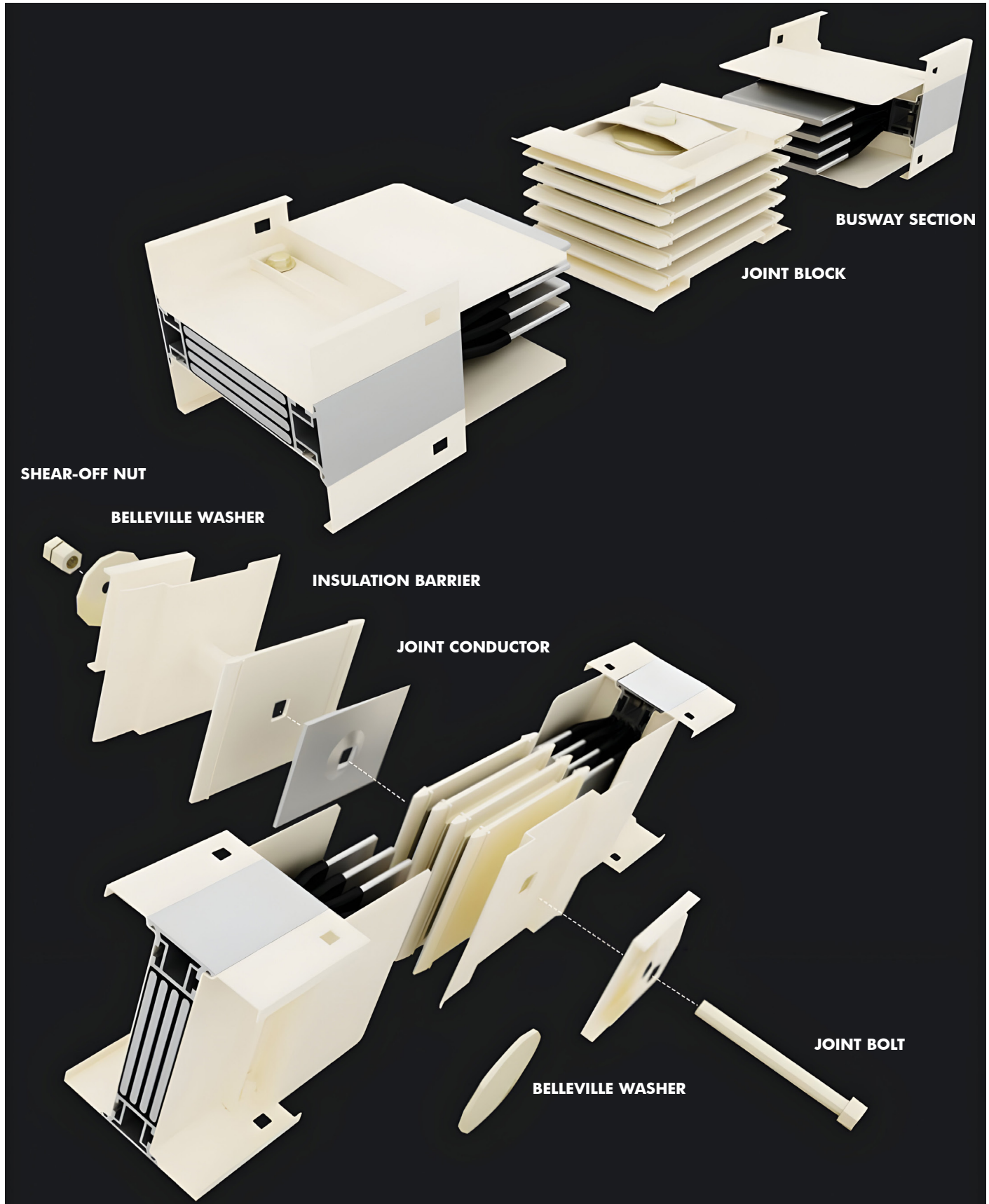
Mikro Busway has been developed to cater the high demands of busway industry market with the following advantages / features of LV busway

- (1) Unique busway construction of compact type design with combined galvanized steel and aluminium heat sink channel
- (2) Perfect balancing joint system
- (3) Easy installation
- (4) EPOXY insulation with good thermal conductivity
- (5) Easy & safer plug-in process for power distribution
- (6) Higher operating temperature & short circuit withstand strength
- (7) Production & process strictly under stringent quality control
- (8) Temperature monitoring system
- (9) On-time delivery
- (10) Prompt response after sales & services



BUSWAY

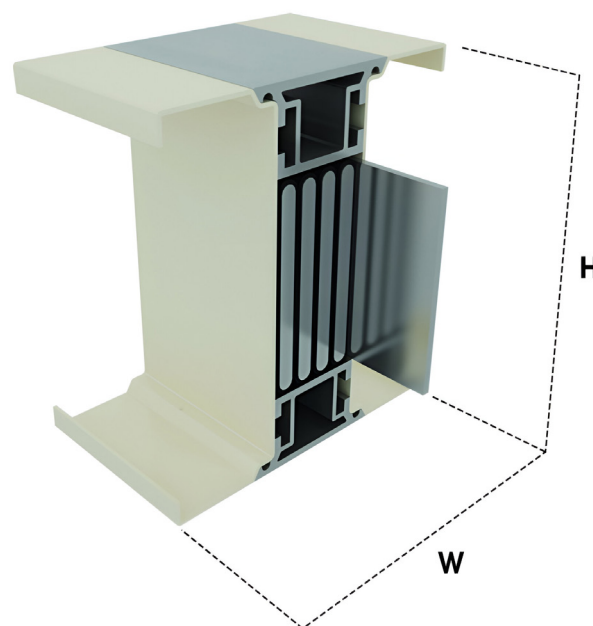
JOINT DETAILS



BUSWAY

SPECIFICATION

Type of busway construction:	Compact design
Standard:	IEC 61439-6 & UL 857
System configuration:	3P3W, 3P3W+E, 3P4W, 3P4W+E 3P5W(200%N) & 3P5W+E(200%N)
Ingress of protection (IP) rating:	IP54 to IP68
Rated AC Voltage:	Up to 1kV
Rated DC Voltage:	Up to 1kV
Frequency:	50Hz / 60Hz
Current rating:	Up to 7500A
Conductor:	Copper
Service temperature:	Up to 50°C
Short circuit capacity:	Up to 150kA
Plug in type distribution:	Up to 400A
Tap off type distribution:	Up to 1600A



BUSWAY

RATING, SIZE AND WEIGHT



KEMA-KEUR IEC 61439-6 CERTIFICATION

NO.	RATED CURRENT (A)	BUSWAY STACKING	WIDTH (mm)	HEIGHT (mm)	3W (kg/m)	3W+PE (kg/m)	4W (kg/m)	4W+PE (kg/m)
1	400	1	125	95	12	12	13	14
2	630	1	125	95	13	13	14	15
3	800	1	125	105	14	15	16	17
4	1000	1	125	115	16	17	18	20
5	1250	1	125	145	22	24	25	27
6	1600	1	125	165	26	28	30	32
7	2000	2	125	245	40	44	47	51
8	2500	2	125	285	48	52	57	61
9	3200	2	125	325	56	61	66	71
10	4000	2	125	405	71	78	85	92
11	5000	3	125	540	99	108	118	127
12	6300	3	125	615	114	125	136	147
13	7500	3	125	705	132	145	158	171

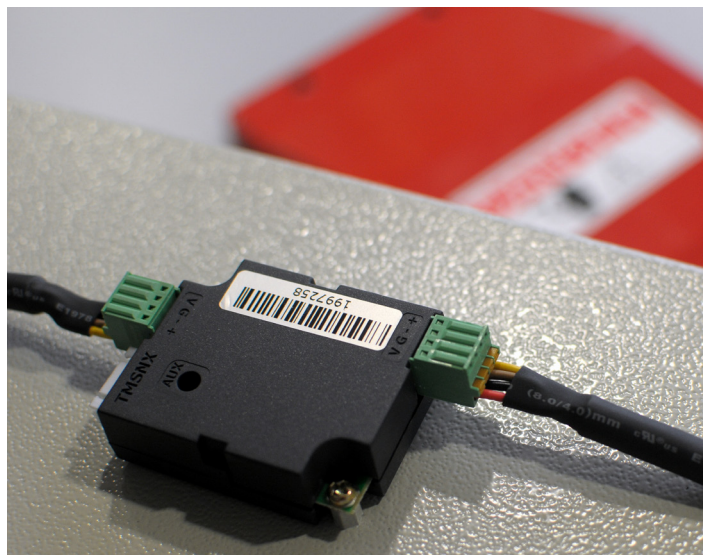


UL 857 CERTIFICATION

NO.	RATED CURRENT (A)	BUSWAY STACKING	WIDTH (mm)	HEIGHT (mm)	3W (kg/m)	3W+PE (kg/m)	4W (kg/m)	4W+PE (kg/m)
1	630	1	125	115	16	17	18	20
2	800	1	125	130	19	20	22	23
3	1000	1	125	145	22	24	25	27
4	1250	1	125	165	26	28	30	32
5	1600	2	125	245	40	44	47	51
6	2000	2	125	285	48	52	57	61
7	2500	2	125	335	57	63	68	73
8	3200	2	125	405	71	78	85	92
9	4000	3	125	540	99	108	118	127
10	5000	3	125	615	114	125	136	147
11	6000	3	125	705	132	145	158	171

TMSNX

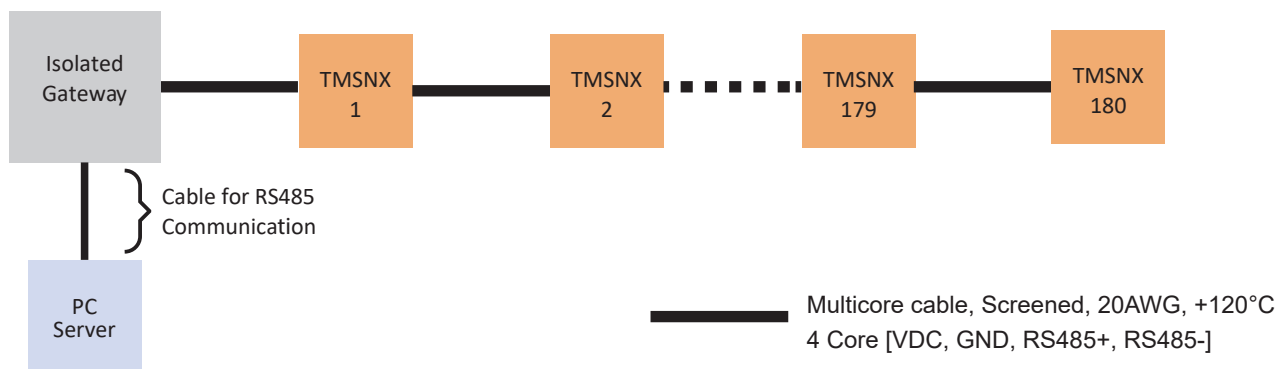
BUSWAY TEMPERATURE MEASUREMENT SENSOR



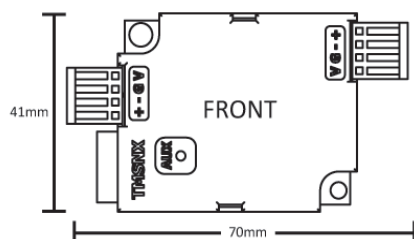
TECHNICAL DATA

- Input voltage range : 8 VDC to 24 VDC
- Humidity : 5% to 95%
- Sensor measurement range : 0 °C to +120°C
- Measurement accuracy : +/-2°C
- Maximum cable withstand temperature: +120°C
- Power consumption : 3W Max
- Communication : Non Isolated RS485 Modbus RTU Protocol, 9600 Baudrate, Even Parity, 1 Stop bits
- Dimension without casing : 70mm(w) x 15mm(h) x 39mm(d)
- Dimension with casing : 70mm(w) x 15mm(h) x 41mm(d)
- Enclosure protection : IP20
- Compliance with IEC : IEC 61010-1 Safety Test
- Compatible with Mikrosafe Software

CONNECTION DIAGRAM



TMSNX DIMENSION

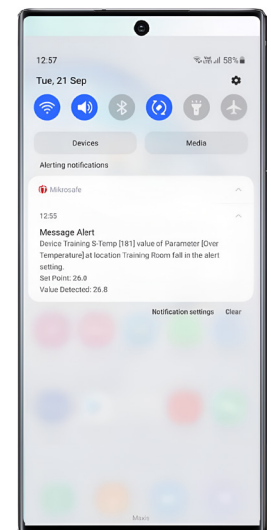
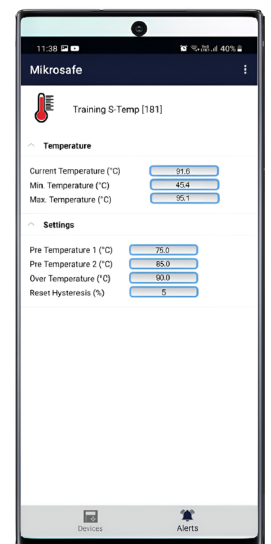
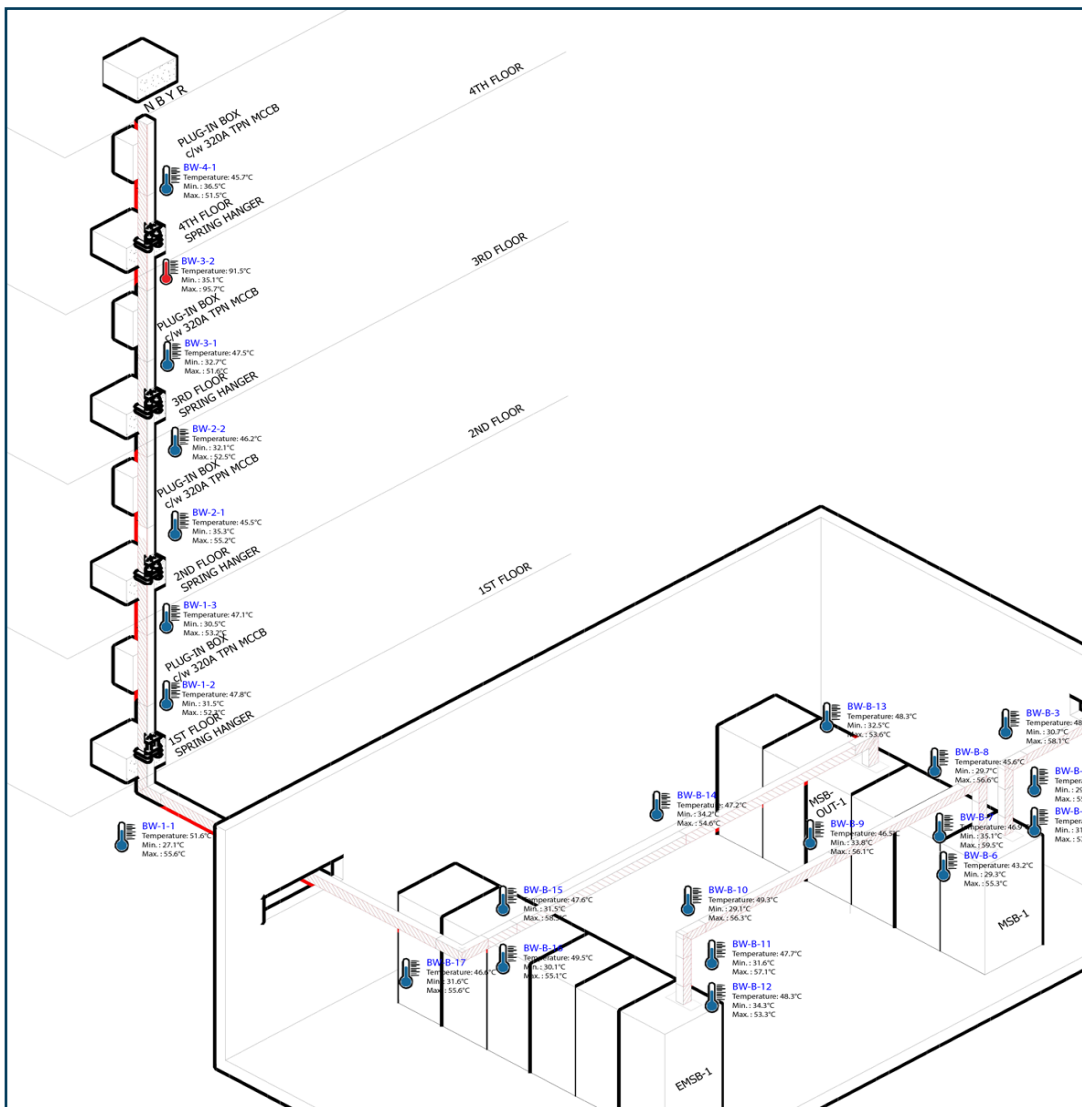


MULTI POINT

MIKROSAFE SOFTWARE

Mikro's multipoint busway temperature monitoring system is the latest addition to Mikro's further enhanced Mikrosafe system which comprises of temperature sensor module, power supply and fire retardant cable. This system is able to monitor the temperature at every critical joint and is able to link to protective relay such that it can trigger the protection and trip the relay when critical temperatures are detected at the busway.

Users are able to set access control, level control and alerts to prompt the maintenance crew beforehand when abnormal temperatures are detected and provide real time temperature monitoring data to facilities/building managers through their PC or mobile phone via a mobile APP (in Android or Apple system).



Ability to troubleshoot & identify rapidly on problem segments of busway with over temperature issues and receive push notification of alert on Mobile Application



Mikro[®]
MIKRO BUSWAY SDN BHD
F.K.A. EPE BUSWAY SDN BHD
(Reg. No.: 201001002004)

Lot 6, Jalan Permata 2,
Arab Malaysian Industrial Park,
71800 Nilai,
Negeri Sembilan, Malaysia.
Tel: +606 7998500
Email: sales@itmikro.com

